

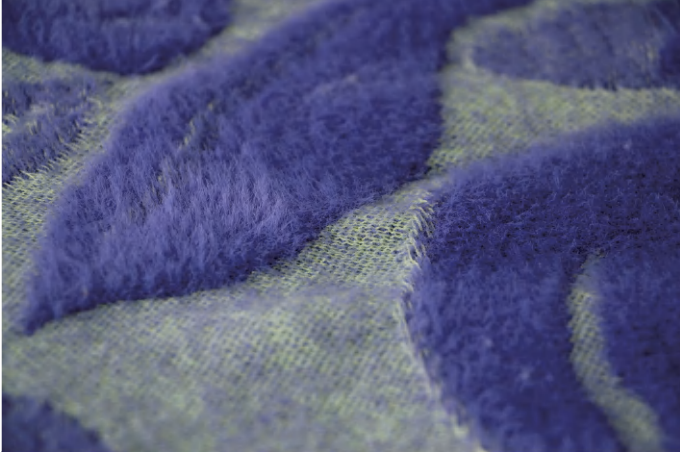


LXA系列电脑横机

LXA SERIES COMPUTERIZED FLAT
KNITTING MACHINE

LXA高效5.2英寸小机头
Efficient 5.2-inch small carriage





LXA252

畅销型的电脑横机，功能齐全，性能稳定，配置机头快速折返和动态密度控制等新技术，具有出色的性价比，做到了经济实用、高效、稳定的使用效果。

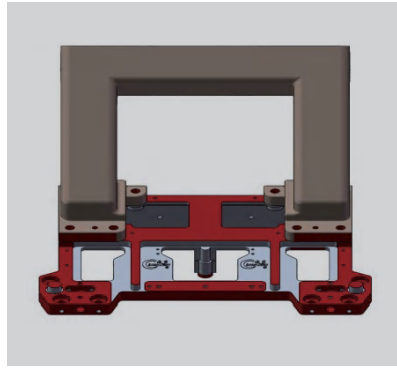
The best-selling computerized flat knitting machine with complete functions, stable performance, configured with rapid carriage return and dynamic density control function and other new technology, with excellent cost performance, it has achieved economic, practical, efficient, stable effect.





采用LED触摸屏，可显示各种编织相关参数

LED touch screen for displaying various knitting related parameters



缩小机头尺寸，减轻机头重量减少运动惯性，以加快回转速度

Reduce the size and weight of the carriage and make the return speed faster



采用高性能伺服控制技术，机头运转行程更加精准，换向更快

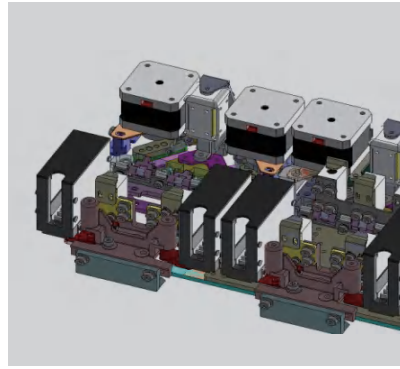
High-performance servo control technology, the machine's running position is more accurate, and the return is faster





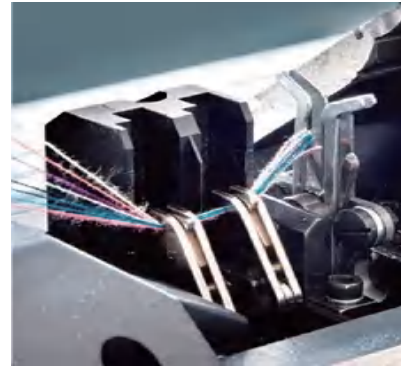
提供稳定的牵拉力，使衣片组织拉力更均匀，力度可靠，可实现零间纱自动起底

Providing stable drawing tension, make the fabric drawing more smoothly, and reliable. Automatical knitting from bottom of fabric without using set-up yarn to avoid unnecessary waste can be realized



推针三角独立控制机构，缩短机头换向时间

Adjustable tight tuck device can fully meet the special needs of the loose or tight tuck organization of the shoe upper, independent pushing needle cam control mechanism, shorten the carriage return time



可靠的剪刀夹子装置，通过系统控制，实现自动夹纱剪纱操作

Reliable scissors and clip device for automatic yarn catch and cut operations through system control

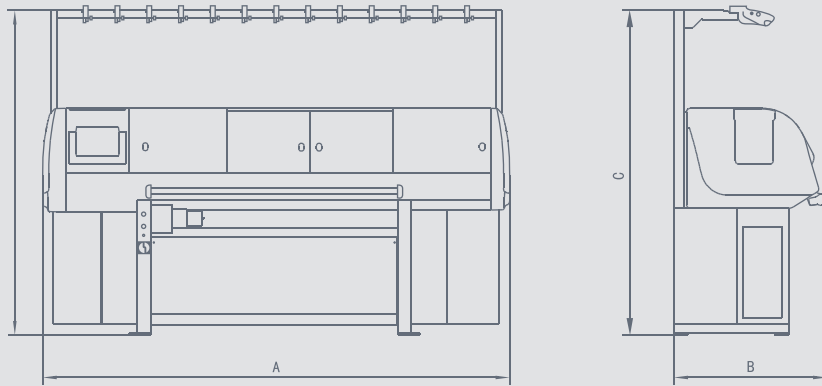


产品参数

Model 机器型号	LXA252SC	LXA352SC	LXA380SC	LXA260C
Basic parameters 基础参数	● Standard configuration ○ Optional — Without			
Gauge 针型	5G/7G(V)/8G/9G/10G/12G(V)/14G(V)/16G/18G			3G/3.5G
Carriage 机头数量	1	1	1	1
Knitting system 编织系统	2 SYSTEM	3 SYSTEM	3 SYSTEM	2 SYSTEM
Width (INCH) 宽度 (英寸)	52	52	80	60
Inset needle bed 插片针板	●	●	●	—
Running speed (M/S) 运转速度 (米/秒)	1.4	1.4	1.4	1.4
SMALL Carriage 小机头	●	●	●	—
Probe 探针	Infrared	Infrared	Infrared	Infrared
Motor transfer 马达翻针	●	●	●	●
Machine two side tool box 两边工具箱	○	○	○	●
Cleaning system 清洁系统	—	—	—	○
Motor driving selection JACK raise cam 马达换向	○	○	○	—
Needle bed racking 针板摇床	± 1 inch	± 1 inch	± 1 inch	± 1 inch
Sinker 信克	●	●	●	●
Lubrication system (auto, manual, none) 润滑系统 (自动、手动、无)	Manual	Manual	Manual	Auto
Tight tuck 紧吊目	—	—	—	—
Dynamic density 可变量目	●	●	●	●

Model 机器型号	LXA252SC	LXA352SC	LXA380SC	LXA260C
Take down device 牵拉系统	● Standard configuration		○ Optional	— Without
Rubber roller 皮罗拉	●	●	●	●
Auto down roller 自动开合下罗拉	○	○	○	○
Manual down roller 手动开合下罗拉	—	—	—	—
Comb 起底板	●	●	●	●
Wire comb 无废纱起底	○	○	○	○
Scissors 剪刀夹子	● Left side	● Left side	● Left side	● Two side
Yarn device 喂纱装置	● Standard configuration		○ Optional	— Without
Top tension 天线台数量	16 PCS /20PCS (V)	16 PCS /20PCS (V)	24 PCS	16 PCS
Lycra feeder 氨纶送纱器	—	—	—	—
Yarn storage device 储纱器	16G and 18G			
Yarn supplier device 送纱器	3G/3.5G/5G/7G (V)/8G/9G/10G/12G (V)/14G (V)			
Yarn carrier 纱嘴	● Standard configuration		○ Optional	— Without
Carrier quantity 纱嘴数量	16 PCS	16 PCS	16 PCS	16 PCS
Auto motor-driven carrier 智跑纱嘴	○ Max 8 pcs	○ Max 8 pcs	○ Max 8 pcs	—
Up-and-down motion carrier 自动上下纱嘴	○ Max 8 pcs	○ Max 8 pcs	○ Max 8 pcs	—
Weft insetion carrier 衬纬纱嘴	○ Max 2 pcs	○ Max 2 pcs	○ Max 2 pcs	—
Ultra-wide adjustable carrier (34-47mm) 超宽可调节纱嘴 (34-47毫米)	○ Max 2 pcs	○ Max 2 pcs	○ Max 2 pcs	—
Double holes 双孔纱嘴	○ Max 4 pcs	○ Max 4 pcs	○ Max 4 pcs	○ Max 4 pcs

Model 机器型号	LXA252SC	LXA352SC	LXA380SC	LXA260C
Safty device 安全装置	● Standard configuration		○ Optional	— Without
Emergency stop devices 紧急停车装置	●	●	●	●
Safty cover with infrared ray 护罩红外感应	●	●	●	●
Power cut off device 断电记忆	●	●	●	●
Alarm device 报警装置	● Standard configuration		○ Optional	— Without
Fabric rewind alarm (infrared ray) 布片倒卷报警（红外线）	—	—	—	—
Fabric rewind alarm (detection board) 布片倒卷报警（倒卷板）	●	●	●	●
Needle crash alarm 撞针报警	●	●	●	●
Yarn breakage alarm 断纱报警	●	●	●	●
Yarn knot alarm 纱结报警	●	●	●	●
Stroke protection device (racking) 摇床限位报警	●	●	●	●
Stroke protection device (carriage) 机头限位报警	●	●	●	●
Over load alarm 过载报警	●	●	●	●
Knit piece finish alarm 编织件数完成报警	●	●	●	●
Sepecific row stop 指定行停车	●	●	●	●
Program error 程序错误	●	●	●	●
Power 电源	● Standard configuration		○ Optional	— Without
AC 220V ± 5%(1phase 50/60Hz) 单相220V、50/60HZ	●	●	●	●
AC 380V ± 5%(3phase 50/60Hz) 三相380V、50/60HZ	○	○	○	○
Power consumption 功率	1.5KW	2.0KW	2.0KW	2.0KW



机器型号 MACHINE MODEL	外形尺寸(毫米) BOUNDARY DIMENSION(mm)	包装尺寸(毫米) PACKAGE DIMENSION(mm)	净重(kg) NET WEIGHT(KG)	毛重(kg) GROSS WEIGHT(KG)
	长 × 宽 × 高(A×B×C) LENGTH×WIDTH×HEIGHT(A×B×C)	长 × 宽 × 高 LENGTH×WIDTH×HEIGHT		
LXA252S	2650×875×1850	2900×1050×1820	810	1000
LXA352S	3720×900×1900	3900×1050×1820	1500	1750

苏州梵洲科技有限公司

SUZHOU FANZHOU TECHNOLOGY CO.,LTD

江苏省常熟市阳光大道8号
No.8 Yangguang Road,Changshu City, Jiangsu, China

电话 T +86-15250337092

传真 F +86-15250337092

邮箱 E Juanschuan@gmail.com

Website: www.fanzhoultd.com

Whatsapp: +86-15250337092



Website



Wechat



Whatsapp